

**Istruzioni di posa**  
Hanging instructions  
Instructions de pose  
Verlegungshinweise  
Instrucciones de colocación  
Инструкция по укладке

**Wall&decò®**

P 3  
Italiano

P 11  
English

P 19  
Français

P 27  
Deutsch

P 34  
Español

P 43  
Русский

Materiali / Materials

Matériaux / Materialien

Materialiales / материалы



Prodotto  
/ Product  
Produit / Produkt  
Producto



Colla / Adhesive  
Colle / Kleber  
Cola

Strumenti (non inclusi) / Tools (not included) / Outils (non inclus) / Arbeitsgeräte (nicht inbegriffen) / Инструменты (не включены)



Rullo / Roller  
brush  
Rouleau / Rolle  
Rodillo / ролик



Spatola / Spatula  
Spatule / Spatel  
Espátula  
/ шпатель



Secchio / Bucket  
Seau / Eimer  
Cubo / ведро



Taglierino  
/ Cutter  
Cutter / Cutter  
Cúter / резец



Piombo / Plumb line  
Fil à plomb / Lot  
Plomo / свинец



Panno / Cloth  
Chiffon / Tuch  
Pincel / ткань

# d.eco**dura**<sup>TM</sup>

<sup>p</sup>12. **Preparation**  
\_ The walls

<sup>p</sup>13. **The wallpaper**  
\_ The adhesive

<sup>p</sup>14. **Hanging**

<sup>p</sup>17. **Useful tips**

# Wall&decò®

## d.ecodura™

### **d.ecodura™ - the new paradigm in wallpaper**

*The first wallpaper made of organic bio-vinyl,  
with no compromise between Sustainability, Durability  
and Beauty.*

By utilizing BIOVYN™, a game-changing material without any virgin fossil-based plastics, d.ecodura™ proudly achieves almost 50% lower carbon footprint compared to our original wallpaper.

At the same time, d.ecodura™ matches the same high performance as traditional vinyl: its durability stands firm against scratches, maintaining remarkable washability

**Joining the Solution, Not the Problem**

# Preparation



## The walls

Before starting, it is best to assess the general conditions of the wall to be covered. The quality of the walls where the wallpaper will be applied is crucial for best hanging results. Proceed according to the instructions provided below.

01. Carefully remove from wall surfaces any trace of dirt and dust.
02. When laying the wallpaper over a recently applied plaster wall, any superficial roughness (i.e. sand grains) should be removed by using a steel spatula or fine grade sandpaper.
03. Make sure that there are no damp patches.
04. If the wall surface is uneven plaster over the area to obtain a smooth surface.
05. In case of newly built walls, plasterboard walls or recently skimmed surfaces, proceed with the application of a special fixative.
06. Apply a water-based washable paint over the entire surface until color appears uniform.



## The wallpaper

01. Make sure that the rolls are in good conditions, that patterns, colors and edges between rolls are matching and lined up.
02. Refer to the hanging scheme provided and proceed to number the rolls on the walls to make sure there are enough rolls for the wall surface to be covered.

**The numbers on the sheets indicate the sequence to be followed to correctly match the graphic pattern.**



## The adhesive

01. Prepare the adhesive by mixing it well with water in a clean container by following the instructions.
02. The adhesive is best prepared at least 2 hours before application to ensure correct viscosity.

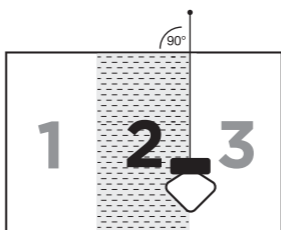


# Hanging

01.

Follow the sequential numbering shown on the rolls and the enclosed hanging scheme to ensure the pattern is accurately matched. Start by applying roll number 2 and not roll number 1.

Accurate application of the first roll is essential; to do this, use the plumb line to correctly position the first roll before fixing it to the wall.

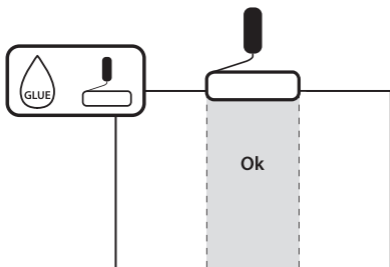


02.

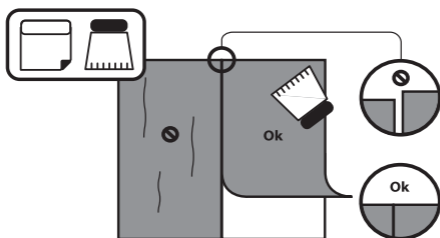
A hanging sequence for each roll needs to be traced on the wall by carefully marking the width of each roll on the wall.

03.

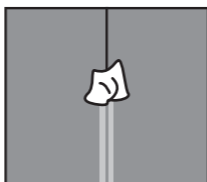
Proceed to evenly spread plenty of adhesive directly onto the wall using a medium-bristle roller (where necessary use a brush). Adhesive should be applied by section-by-section according to the dimensions of single rolls.



04. Make sure each roll is well fixed to the wall by using a plastic spatula. Carefully position the rolls next to each other. The rolls must be well aligned, with no overlaps or gaps, and ensure pattern continuity. Apply the other rolls in the same way.



05. As soon as one roll has been applied, immediately remove any adhesive residue by using a soft and damp cloth.

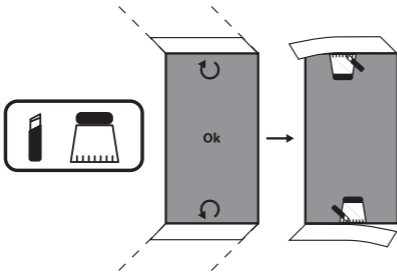


06. In case of a hanging error, remove the entire roll and reapply (if necessary, spread more adhesive).



07.

Trim off any excess wallpaper with a sharp cutter and a spatula.



08.

Never proceed by turning corners with the roll, but cut the roll at corners.

09.

Instead, proceed by turning the rolls over edges.

10.

When starting to apply rolls on a new wall, carefully follow the above instructions and use the plumb line again.

11.

After completing the installation, make sure all the joints are well aligned and carry out any touch-ups using colored pencils or markers.

12.

Should the quantity of the adhesive supplied not be sufficient to complete wallpaper hanging, a common wallpaper adhesive can be used.

# Useful Tips

01. In the case of very dark wallpapers, it is advisable to coat the wall with washable paint of the same dark color as the wallpaper.

02. Always handle dark colored rolls with wet hands.

03. Room temperature should be between 10-38°C when hanging.

04. During hanging, place particular attention to air currents, which can compromise the correct roll hanging.

05. The wallpaper can be washed with a damp cloth and mild soap.  
**DO NOT USE SOLVENTS.**