



emma hayes



# Cloud

Commercial grade wallcovering

PVC Free

To be floating and weightless, light and warm, free, happy and tranquil

Design:	Cloud
Colour:	Sky
Pattern number:	EH020CSC
Description:	Commercial grade wallcovering "PVC free" Type II, eco-friendly product, made with polyester/natural fibre technology. Meets or exceeds federal specification CCCW-408D
Printed width:	51" + 1" overlap (129.5cm +2.5cm overlap)
Substrate width:	54" (137cm)
Repeat:	18" (45.7cm) vertical repeat, straight match
Fire rating:	ASTM-E84 Tunnel Test Passed Class A CAN/ULC-S102 Passed all requirements NZ Group 2-S
Installation:	Pattern match, double cut on the wall
Weight:	14oz. per lineal yard (9.3oz. per square yard) 315.3g/m <sup>2</sup>
Thickness:	0.022in 0.559mm
Sustainability:	PVC & POA (Olefin) free, No Plasticizers, No Chlorine, No Formaldehyde, No heavy metals

NSF-342 - Certified for Silver compliance

HPD - Health Product Declaration available

EPD - Environmental Product Declaration available  
- UL third party certified for wallcovering industry average

Low VOC - Meets California CDPH Standard for Schools and Offices when tested to CA 01350

Phthalate free formulation

Prop 65 compliant

Manufactured without the use of Brominated flame retardants

Recycled Content - Minimum 31% post-consumer recycled content



#### Paste the paper

The adhesive should be applied to the reverse of the wallcovering before application to the wall.



#### Washable

Dirt and some domestic water-based stains may be cleaned carefully from the front face with a damp sponge and soapy water. Oils, fats and solvent-based stains are not expected to be removable. Refer full cleaning instructions overleaf.



#### Double cut

The wallpaper is overlapped and then cut through both layers. The excess pieces are then removed and the paper smoothed down to create a perfect butt join.



emma hayes

Physicals	<p>A breathable, lightweight alternative to vinyl that meets Type II physicals including:</p> <p>ASTM E96 Permeability 66 Perms Passed WA 101 Minimum for Breathable Wallcovering (8 Perms)</p> <table><tr><td>Break strength</td><td>Tear strength</td></tr><tr><td>Cold crack</td><td>Heat Aging</td></tr><tr><td>Shrinkage</td><td>Stain resistance</td></tr><tr><td>Coating Adhesion (Bond)</td><td>Colorfastness</td></tr><tr><td>Washability</td><td>Scrubability</td></tr><tr><td>Blocking</td><td>Crocking</td></tr></table>	Break strength	Tear strength	Cold crack	Heat Aging	Shrinkage	Stain resistance	Coating Adhesion (Bond)	Colorfastness	Washability	Scrubability	Blocking	Crocking
Break strength	Tear strength												
Cold crack	Heat Aging												
Shrinkage	Stain resistance												
Coating Adhesion (Bond)	Colorfastness												
Washability	Scrubability												
Blocking	Crocking												
LEEDs eligibility	<p>Can contribute towards the earning of up to 7 LEED credits.</p> <p>MR Credit 4.1 Recycled content 10%</p> <p>MR Credit 4.2 Recycled content 20%</p> <p>Conditionally:</p> <p>MR Credit 2.1 Contribution to project recycling program</p> <p>MR Credit 2.2 Contribution to project recycling program</p> <p>MR Credit 5.1 Manufactured local to the new construction</p> <p>EQ Credit 4.1 When mounted with use of low emitting adhesives</p> <p>EQ Credit 4.6 Contribution to low VOC emitting wall construction</p> <p>Also eligible for LEED v4 credit contribution</p>												

\*\*Permeable structure allows transfer of moisture to minimize possibility of mold and mildew growth. Terralon is intended for use in buildings that are properly designed and maintained to avoid moisture infiltration, condensation, and/or accumulation at wall cavities and wall surfaces, especially in warm, humid climates.  
Note: All LEED credits are based on the total construction of a building. Terralon offers up to a 50% advantage over competitive products for achieving MR Credit 4.1 and MR Credit 4.2 because of its higher percentage of post consumer recycled products.



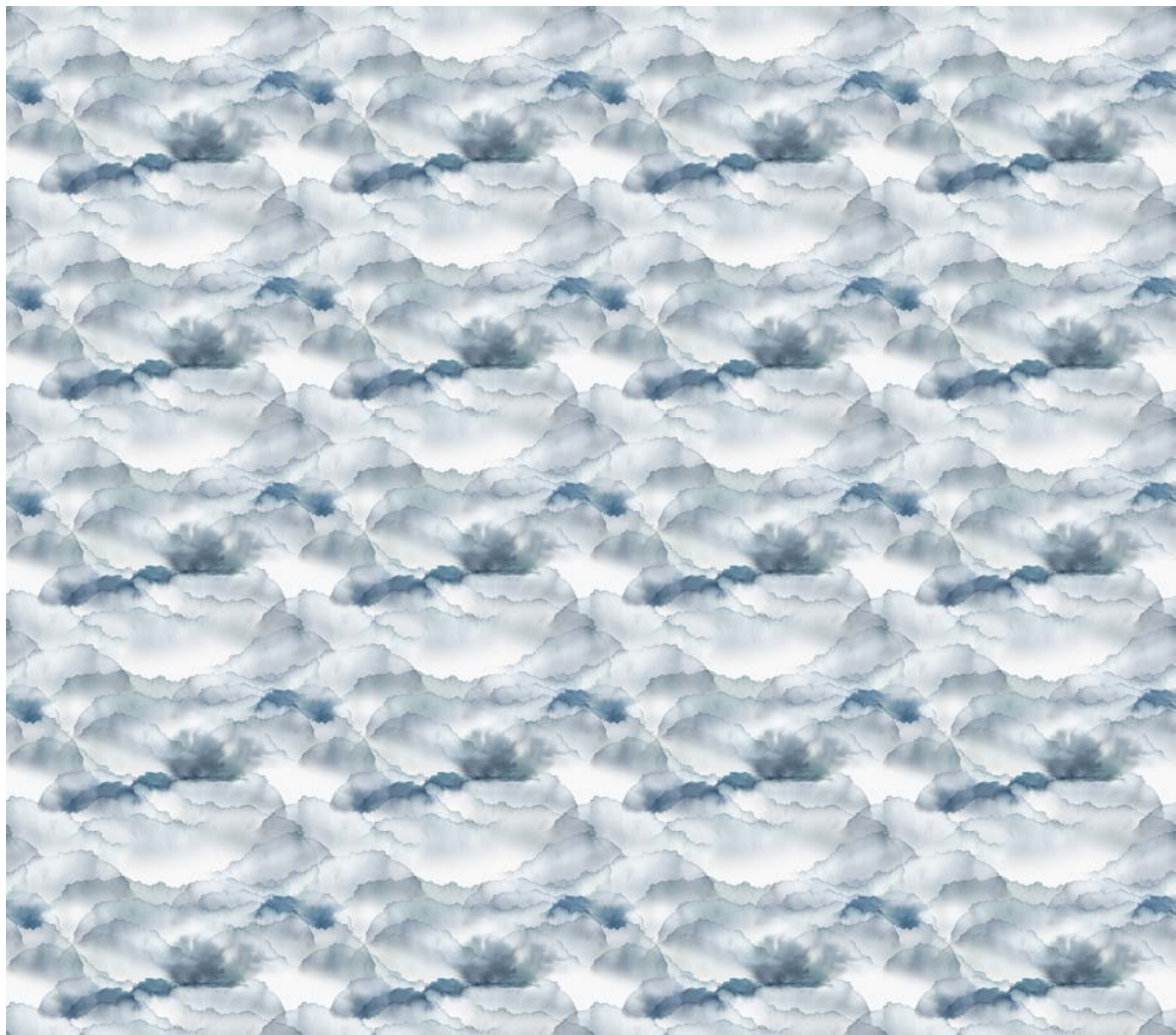
emma hayes

Example of panel layout

Width 51" + 1" overlap  
(129.5 cm + 2.5 cm)

horiz repeat  
25.5"

vertical  
repeat  
18"  
45.7cm





emma hayes

## INSTALLATION INSTRUCTIONS FOR HIGH PERFORMANCE COMMERCIAL GRADE TYPE II PVC -FREE WALLCOVERINGS

**Please note: extra care must be taken during installation as this substrate is more susceptible to creasing than traditional vinyl wallcovering products. Important guidelines for contractors and suppliers — stop & read before installing**

### BEFORE YOU BEGIN

1. If the wallcovering is installed in a manner other than that recommended here, it is done at the sole risk of the installer and no claims will be accepted.

Likewise if you have any reservations or questions, please contact us BEFORE HANGING.

Use of a permeable mold inhibiting primer product and the use of a permeable adhesive containing a mildew inhibitor is recommended.

2. All labels shall be checked for accuracy by the installer to ensure that the shipment is received as ordered. Please refer to the install instructions and diagrams supplied within each package. Examination before hanging is the buyer's responsibility. No claim can be accepted for hanging incorrect wallcoverings or after wallcoverings have been cut and hung showing defects which were apparent at the time of hanging or the associated consequential loss.

3. If no defect is evident before installation, the material should be inspected after two panels are installed. If any defect is evident at this time (or at any point of the installation) no further material should be applied and we should be contacted IMMEDIATELY.

### SURFACE PREPARATION

A. All hanging surfaces must be clean, smooth, dry, undamaged, free of mold, mildew, grease or stains, and structurally intact. All loose paint and other wallcoverings should be removed. If moisture is present, immediately identify and eliminate the source(s) of the moisture and verify that all wall surfaces are completely dry before proceeding.

B. Any mold or mildew MUST be removed from walls and hanging surfaces prior to installation. Walls should not contain in excess of 4% residual moisture content. A moisture meter should be used to determine moisture content. Moisture infiltration and accumulation can lead to mold or mildew growth and must be corrected PRIOR to the installation of the wallcovering. If you are

unsure if moisture problems are present, consult a qualified professional before proceeding. This product is intended for use in buildings that are properly designed and maintained to avoid moisture infiltration, condensation and or accumulation at wall cavities and wall surfaces, particularly in warm, humid climates. Walls should also be treated with bleach, Lysol and/or other approved, mildew –inhibiting products in order to inhibit further mildew growth. Manufacturer will not be responsible for any performance and/or quality issues if moisture problems are not addressed before installation, and/or if the building is not properly maintained to prevent moisture infiltration following installation.

C. Proper surface preparation is key to getting great results. To prepare the surface properly, we recommend that you prime all surfaces with a permeable, mold inhibiting wallcovering primer.

D. Use only a lead pencil for marking walls and back of wallcovering. Do not use ballpoint or marking pen, they will bleed through the surface.

E. Do not install wallcovering unless a temperature above 18°C / 65°F is maintained in both areas of installation and storage for at least 48 hours prior to installation.

### ADHESIVE

Our Type II substrate is a highly permeable wallcovering and should be installed with a heavy duty adhesive and primer with mold and mildew inhibitors. Manufacturers such as Roman Decorating and Zinsser offer permeable adhesives and primers with advanced mold and mildew protection. Please check with these manufacturers for their latest products. Roman Eco brand primers and adhesives are recommended for compliance with NSF-342 sustainability.

In New Zealand, we recommend Roman Pro-880 adhesive.



**Paste the paper**



**Washable**



**Double cut**



emma hayes

#### ADHESIVE APPLICATION

Do not dilute adhesive. Brush an even coat of paste over entire back of wallcovering. Gently double material together and “book” material for ten minutes. Do not fold or crease booked material.

#### SELECTING AND CUTTING WALLCOVERING

CAUTION: ALL CUTS ARE TO BE DONE WITH A SHARP, NEW BLADE EVERY TIME. A DULL BLADE WILL RESULT IN FRAYED EDGES AND POOR SEAMS.

A. Before cutting, examine goods to make certain pattern colour is satisfactory and as ordered. The installer should have a sample of wallcovering pattern for comparison. Please note a small colour variance between sample and production can be expected due to the inherent nature of the manufacturing process.

B. For installation of a custom design, please refer to the diagram supplied for panel installation.

#### APPLYING WALLCOVERING TO WALL SURFACE

1. Separate panels have been printed to include
  - a 5cm / 2 inch overhang ceiling and base
  - selvedge on each edge, along with a 2cm / 1 inch pattern overlap for double cut pattern match on the wall
3. Apply the recommended adhesive to the back using a paint roller. Work the adhesive in, to cover the back completely, especially near the edges. Mate each end toward the middle, pasted sides together, aligning the edges carefully so they do not dry out.

CAUTION: Do not crease wallcovering. Allow to “relax” for ten minutes (booking). This will allow the adhesive to penetrate the wallcovering fabric, which is important to a successful installation.

**4. With all directional patterns, it is important to line up patterns at eye level allowing any drift in lineup to run off toward ceiling and floor. The standard allowance is one quarter of an inch up or down. If pattern is lined up at the ceiling the pattern will begin misalignment sooner and the gap will be larger. Also, most patterns will be viewed at eye level therefore it is that area that needs to look aligned. If there are any questions about pattern lineup, contact us. Be sure first drop of wallcovering is square on wall by plumbing the wall and using a level.**

**5. When installing, exact trimming and line up of the pattern is critical** (See installation instructions specified to each design.)

6. Avoid burnishing the face of the material. Use a wallcovering brush or a plastic scraper to smooth the wallcovering onto the wall.

7. Do not rub. Do not allow vinyl adhesive to dry on surface as it may leave a white residue. Wash off excess paste from face of wallcovering as you hang it with a cellulose sponge. The cellulose sponge must be rinsed in clean water after every use. Blot dry with a clean cloth.

8. Overlap the second strip over the edge of the first strip. Tape seams underneath with a low adhesion painter's tape before overlapping and double cutting to avoid getting adhesive on the wallcovering. If paste does get on the vinyl, clean it off immediately with clean warm water and blot dry with a clean lint less towel. Use a soft bristle brush to wash the ceiling and the baseboard to remove any paste residue. Do not leave any overlap on the seams since vinyl will not adhere to itself. \*Seams should be vertical, have a tight fit, and be free from air and paste bubbles.

9. After two panels are smoothed to wall surface and excess paste removed, examine the installed panels for color uniformity. Any objectionable variations in color match, pattern match, etc...should be immediately communicated to us for inspection before proceeding further with installation.

10. After installation, the walls and wallcovering should be monitored for potential moisture or vapor infiltration or accumulation. Any such infiltration/accumulation after installation must be promptly eliminated in order to reduce the risk of mold/mildew growth.



---

emma hayes

## Cleaning instructions

### **1.0 General Conditions, Removing Day-to-Day Soil**

Ordinary dirt and smudges can be removed with a mild soap and warm water. Clean from bottom of wall upward. Rinse thoroughly with clean water from the top down using a sponge. Deeply embossed wallcoverings need extra attention to remove suds or loosened dirt that may lodge in the embossing. Dry wallcovering with a soft lint free cloth or towel.

For more difficult stains that are only surface deep, the use of a stronger detergent is recommended. Always test an inconspicuous area with the stronger detergent to be sure that the surface and ink are not damaged.

DO NOT USE steel wool or powdered abrasive because they can damage the image and textured surface. DO NOT USE solvents, alcohol, pine oil, or cleaners that contain these kinds of products as they can remove the image and damage the textured surface.

When cleaning, always take measures to prevent water from dripping behind molding.

NEVER MIX CLEANING AGENTS TOGETHER, VIOLENT REACTIONS MAY OCCUR.

### **2.0 Surface protection**

Always protect new installations with a high quality topcoat to minimize damage by dirt, scratches and abrasion. This is especially important in high traffic areas where people and objects will have frequent contact with the surface.

DreamScape's DreamGuard Protex3 is a non-hazardous, water-based protective topcoat that is designed specifically to protect your valuable custom wallcovering from scratches, abrasions, smudges and many types of food stains. DreamGuard can be applied with commercial liquid laminating equipment as well as on site with a paint roller.