

紫禁城 Forbidden City



紫禁城

Forbidden City



Behind the impassable and imposing purple walls which form a structured and meticulous grid, the golden palatial roofs of the largest and most sophisticated pre-modern empire in the world shine under the sunlight.

There, in the midst of power and majesty, thousands of books, objects and works of art, treasured for centuries, are guarded with care, astounding all the travellers who pass by.



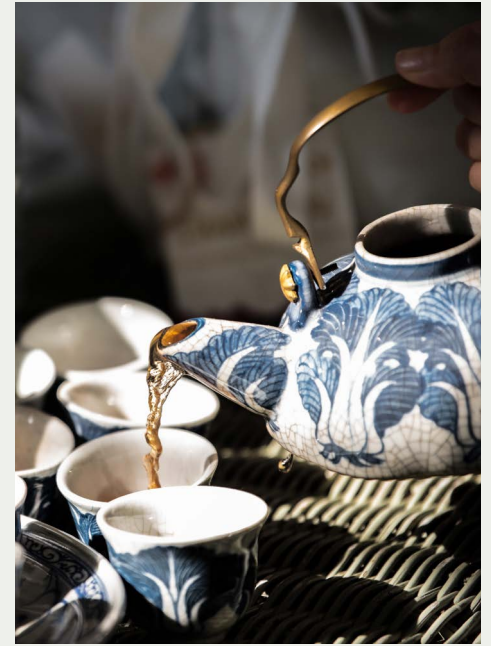
This collection represents our tribute to the great beauty that continues to this day: the physical and spiritual heart of the Chinese civilization.

Here, we reveal some interesting aspects about the colours included in the collection.



青花

Blue Porcelain



Ref. AB00107 Willow Poem Sapphire.



Ref. B00136 Imperial Ibis Sapphire.



Did you know that blue pigment (cobalt oxide) was widely used in Chinese porcelain because it is one of the few materials that resists very high firing temperatures?

朱漆

Red Lacquer



>>

Chinese lacquer is an ancient technique. It is applied slowly with a brush and produces an extremely durable and beautiful finish. By adding cinnabar as a pigment, a deep red, full of intoxicating nuances, is achieved.



Ref. B00101 Tang Walk Ruby.



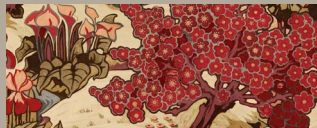
Ref. B00110 Willow Poem Ruby.



Ref. B00143 Ming Pagoda Ruby.



Ref. B00112 Sacred Pheasants Ruby.



Ref. B00145 Yu Garden Ruby.



Ref. B00120 Birds Prosperity Ruby.



Ref. B00120 Birds Prosperity Ruby.

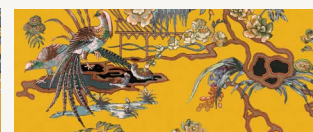


黃帝

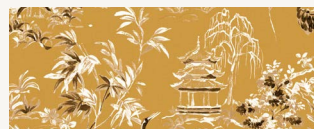
The Yellow Emperor



Ref. B00103 Tang Walk Amber.



Ref. B00114 Sacred Pheasants Amber.



Ref. B00144 Ming Pagoda Amber.



Ref. B00146 Yu Garden Amber.

In Chinese culture, the end of barbarism and the beginning of civilization is attributed to the Yellow Emperor. Perhaps for this reason it was considered to be the imperial colour for centuries, and even today it continues to be associated with concepts such as progress, happiness and glory.

纸

Chinese Paper



Paper as we know it is an invention that has had an enormous impact on the history of humanity. Its origin is found in China in the year 105 AD, when Emperor He of Han ordered his wise men to find a material which was more flexible, resistant and economical than the others used up until then, such as silk, bamboo and wood.





墨水

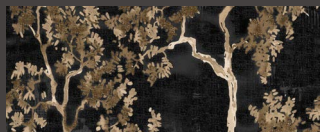
Black Ink



Chinese ink traditionally based on lamp black or soot black began to be used for calligraphy in the 3rd century BC, but shortly after it started to be used in artistic works, due to its beauty and expressiveness.



Ref. B00100 Tang Walk Onyx.



Ref. B00111 Willow Poem Onyx.



Ref. B00142 Ming Pagoda Onyx.



Ref. B00121 Birds Prosperity Onyx.



Ref. B00117 Sacred Pheasants Onyx.



Ref. B00131 Cherry Blossom Onyx.



Ref. B00138 Imperial Ibis Onyx.



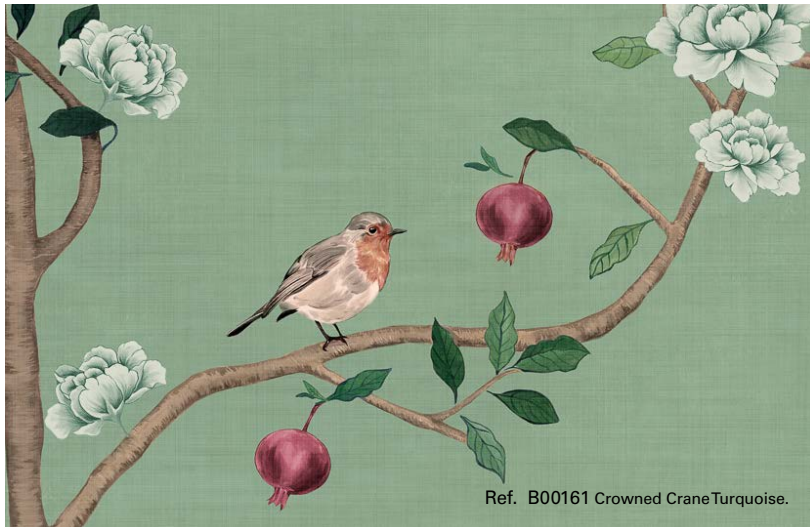
Ref. B00155 Heron's Poetry Sapphire.

颜色

And many more colours



We invite you to discover all the details of the collection, as well as the other colours included.



Ref. B00161 Crowned Crane Turquoise.



面料 Fabrics I



Ref. B00120 Birds Prosperity Ruby.



Ref. B00131 Cherry Blossom Onyx.



The Birds Prosperity, Sacred Pheasants and Cherry Blossom designs are also available in fabric.



Ref. B00115 Sacred Pheasants Jade.



Ref. B00129 Cherry Blossom Turquoise.

面料

Fabrics II



Ref. B00152 Spring Festival Papyrus.



Ref. B00152 Spring Festival Papyrus.

The Spring Festival Papyrus, Heron's Poetry Sapphire and Xi Hu Lake Amber can also be found in Tapestry format.

Adding Beauty to everyday life.

Coordonné is an editor of wall coverings,
fabrics and decorative paints from Barcelona,
which since 1978 has been creating collections
to bring emotion and life to spaces.



C/ Mèxic, 32
08004, Barcelona, Spain

www.coordonne.com
marketing@coordonne.com

+34 933 22 73 14