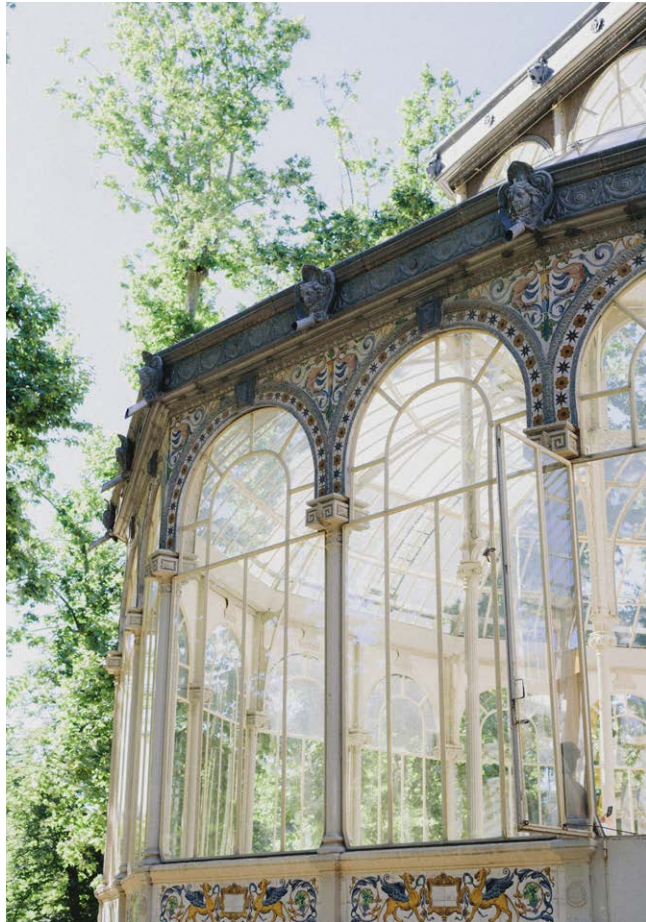


Palacio de Cristal

YBARRA SERRET *for* **Coordonné**



Palacio de Cristal



"The most beautiful greenhouse where time passes by with a unique and inimitable harmony."



Palacio de Cristal evokes the elegant greenhouses of the Belle Époque, built to protect delicate and exotic collections of plants. Designed as spaces of meticulous care, these greenhouses were transformed into oases of harmony. Wildflowers, rare species of plants, wrought

iron arches with entwined jasmines and modernist stained-glass windows with a palatial appearance. These elements give life to a collection where Coqui Ybarra, with her delicate brush strokes, captures the essence of 19th century greenhouses.

Total Look



Ref. TTRESAG Trepadora Sage

Collection available in
Wallcoverings & Fabrics.



Ref. TESTSAG Estanque Sage



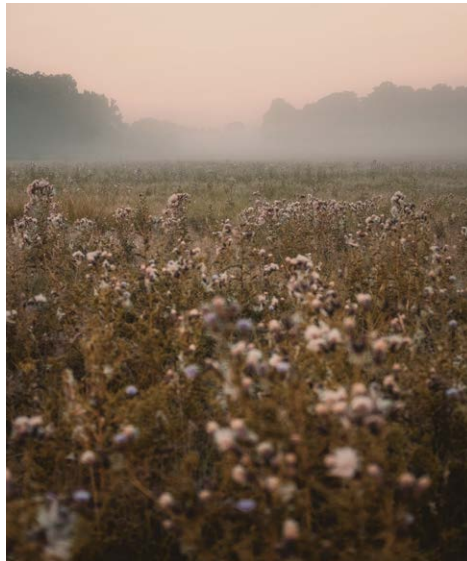
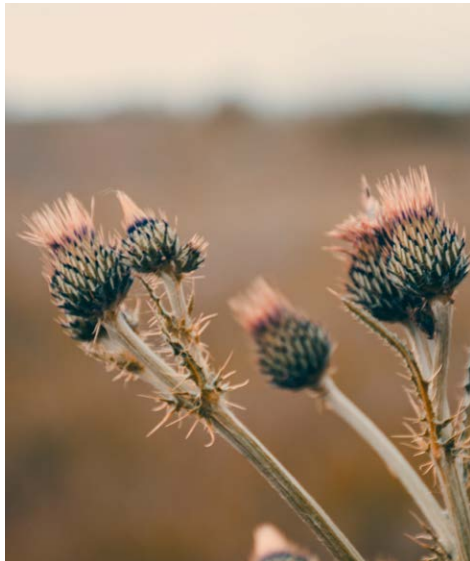
Ref. TVIDSAG Vidriera Sage



Ref. TSILPLA Silvestre Plata

Silvestre

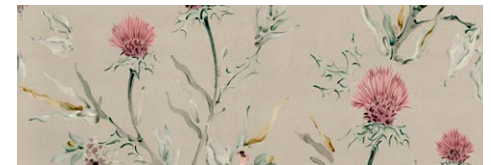
Inspired by rebellious multicoloured thistles that make their way through the greenhouse beds.



Ref. YSP0400 Sage



Colour options



Forja

Oval forging that supports the delicate Italian jasmynes.

Wallcoverings

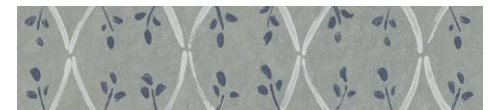
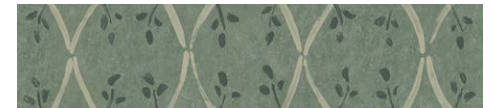


Wallcoverings

Ref. YSP0405 Papiro

The wrought iron fence was erected as an artistic expression to fuse functionality and botanical aesthetics.

Colour options



Estanque


Wallcoverings

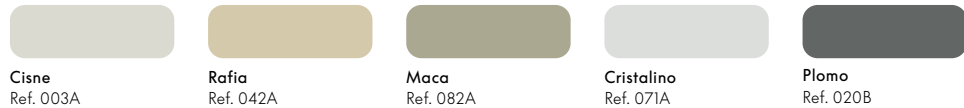


An abstract interpretation of water constantly zigzagging in the breeze.



Ref. YSP0411 Sage

 Total Look | Combine the designs with our paints:

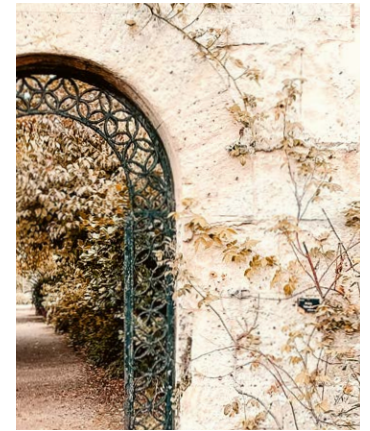
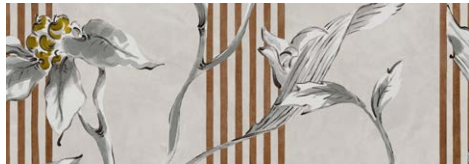


Trepadora

Floral garlands easing their way upwards, enthusiastically seeking the powerful light of the sun.

Ref. YSP0415 Siena

Colour options



The symbiosis between climbing plants and wrought iron structures gives life to charming gardens.

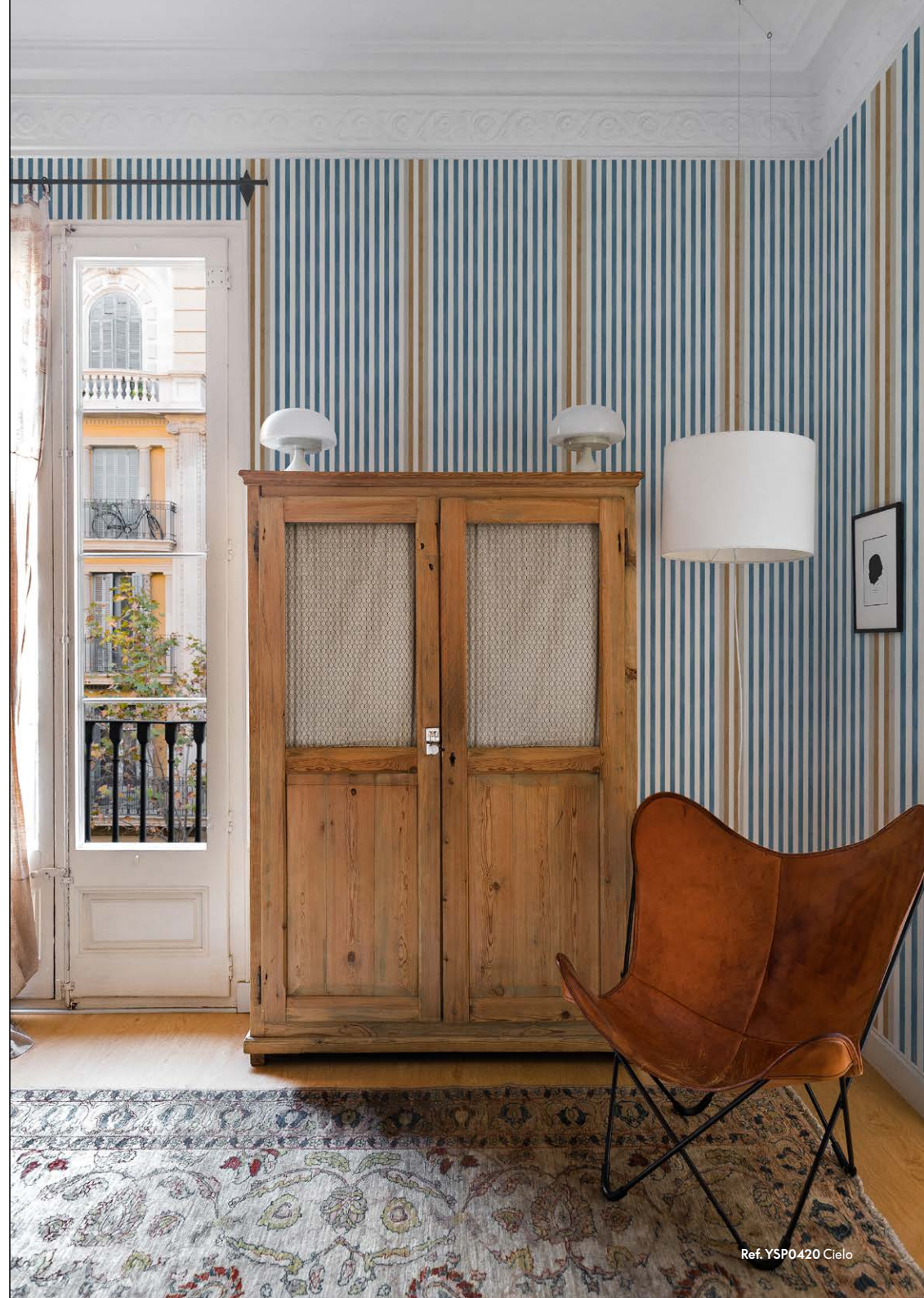
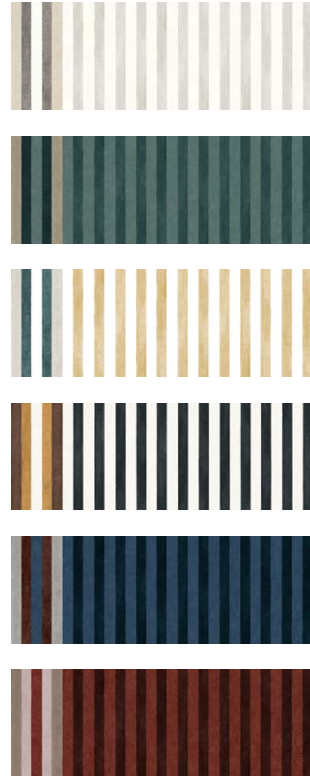


Luz y sombra

The iron fence projected onto the ground in lights and shadows.



Colour options



Vidriera

Kaleidoscopic deco shapes give a colourful appearance to the windows of the palace.

Stained glass marked the origin of modern greenhouses and made it possible to house and preserve exotic plants that explorers brought back from the tropics.



Invernadero

The colossal construction that makes up the interior of the Crystal Palace.

Ref. YSP0433 Plata



The greenhouse or orangery became more than a structure. It was an architectural expression where nature and design came together in a captivating balance.



Le Magasin Pittoresque, 1855

Vistahermosa

Wallcoverings



The panoramic view of bucolic buildings framed among the dense vegetation.

Ref. YSP0436 Nube



Adding beauty to everyday life.

Coordonné is a Barcelona-based editor of
wallpapers, fabrics and decorative paints.
Since 1978, it has been creating collections
which give emotion and life to spaces.



C/ Mèxic, 32
08004, Barcelona, Spain

www.coordonne.com
marketing@coordonne.com

+34 933 22 73 14