

ARTISAN

by

Bodo Sperlein

Coordonné



*“THIS COLLECTION SHOWS
MY MOST ARTISTIC AND
INTIMATE SIDE,*

*as I was able to experiment with
the patterns of nature through
various artistic techniques.”*

Introducing Artisan, a captivating collection of wallpapers, murals and textiles designed by London based designer Bodo Sperlein for Coordonné.

A new and exciting chapter in Bodo's creative journey that continues to showcase the versatility of his designs and his commitment to innovation.

Bodo transforms three-dimensional shapes into a two-dimensional medium, with materials and techniques such as watercolours, graphite, chalk and even collage which contribute to give a unique aesthetic to the collection.





Lobmeyr Script Floor Light,
Bronze Collection Side Table,
Lobmeyr Moiré Carafe & Glass.



Jarosinski & Vaugoin onda table centre piece.



BODO SPERLEIN SHOWCASES AN APPRECIATION OF CRAFT COMBINED WITH HIGH QUALITY MATERIALS.

Dedicated to producing a variety of original, timeless designs, in addition to collaborating with a variety of global luxury brands, such as the LVMH group, he also has his own lines of gallery pieces. Bodo's designs are internationally renowned, and consistently attract international praise. His repertoire includes collaborations and commissions across a multitude of industries, from furniture and lighting to technology and fashion.

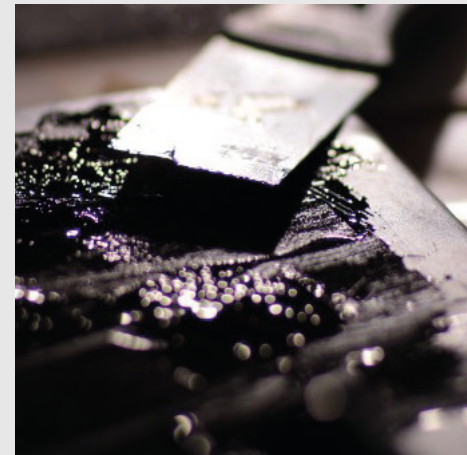
After studying at the University of Arts in London and receiving the Sainsbury's Scholarship and

Crafts Council Grant, he established his own studio, Bodo Sperlein. His pieces are considered works of art and are present in galleries such as Les Ateliers Courbet in New York and 88 Gallery in London. Bodo has received multiple design awards and his works are part of the permanent collection of design museums, including the prestigious Die Neue Sammlung in Munich, and have been exhibited in museums like the V&A and the Neuen Pinakothek.

sepia.

*THIS PATTERN IS
INSPIRED BY 18TH
CENTURY COPPER
PLATE PRINTS.*

Sunlight ripples on water, resembling waves, clouds, and stormy surfaces. Elegant yet energetic, this pattern is inspired by ink drawings, and marbling.



brush.

Wallcoverings & Murals

AN INTERPLAY OF FORM AND FREEDOM.

Dots enhanced by
subtle brush strokes in a
dynamic arrangement.

Ref. Brush Rose B00207.



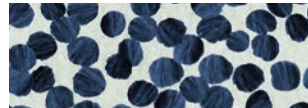
Ref. Brush Emerald B00208.



Ref. Brush Ruby B00209.



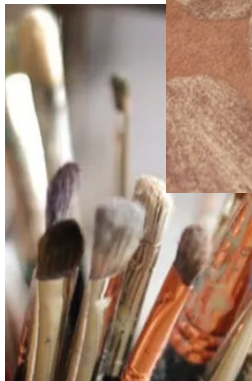
Ref. Brush Lapislazuli B00210.



Ref. Brush Klein B00211.



Ref. Brush Stone B00212.



Ref. Brush Rose B00207.
Mayu Armchair.
Voliere Chandelier.

graphite.

An elegant arrangement of wavy ribbons inspired by Art Deco.



Florin Court, by Guy Morgan and Partners, 1936 London.



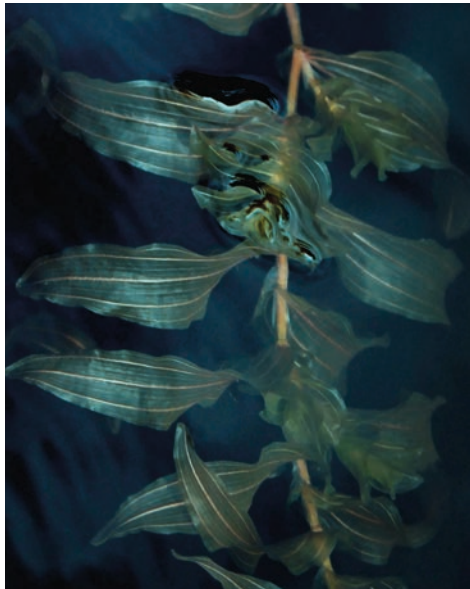
*A METICULOUS GRAPHITE
DRAWING WITH NUANCED
TEXTURES.*

collage.

Wallcoverings & Murals

*AN ABSTRACT
INTERPRETATION OF
UNDERSEA FORESTS.*

Ref. Collage Lapislazuli B00219.
Silva small marble table.



Watercolour and ink
techniques capture the movement
of seaweed underwater.

Ref. Collage Lapislazuli B00219.
The Contourline furniture collection.
Tane Silver Dune bowl.
Tane Silver Rhythm Candlestick.



fluid.

*BOLD STROKES
OF INK LINES.*

A modern design of
abstract forms of plants,
leaves and trees.

Ink Technique explored by other artist like Dali, Miró, Picasso.

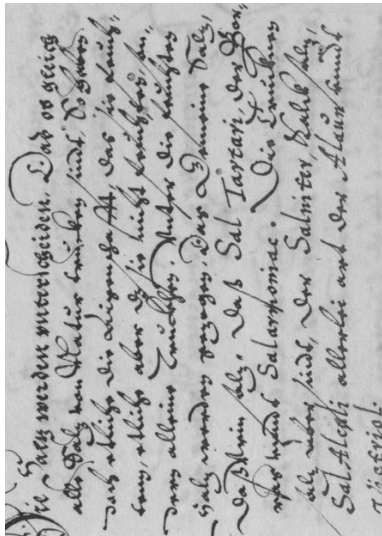


calligraphy.

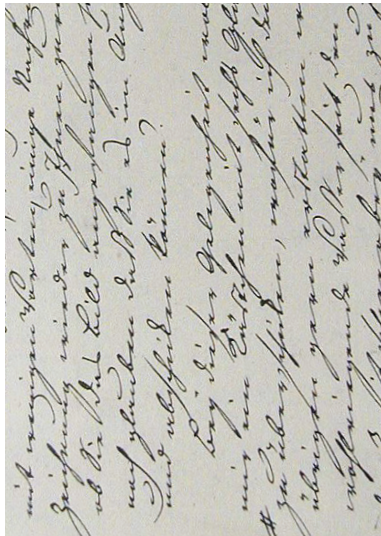
HOMAGE TO TRADITIONAL BRUSHWORK.

Ink and watercolour style lines weave together to create a dynamic pattern, showcasing the art of calligraphy.

Johannes Hennemann Reising (1596), *Artificia Alchimica*



Goethe letter to the painter Hoffmann in Cologne, 1899.



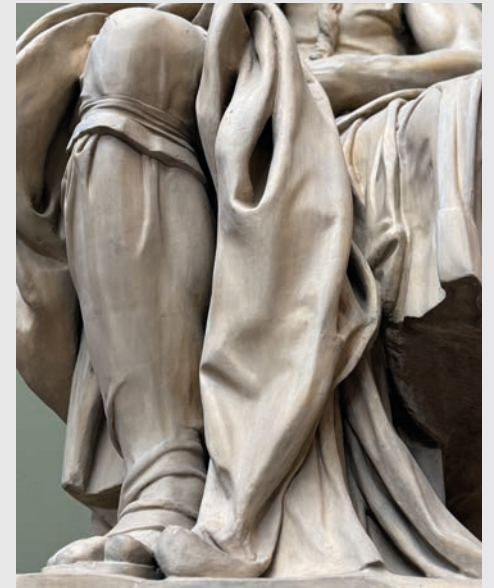
Wallcoverings & Murals





Ref. Fold Stone B00238.
Silva marble table.
Lobmeyr Script Chandelier.

fold.



Mose, Michelangelo Buonarroti,
1513-1536 d.C.

Chalk-like surface texture
that captures the tactile
essence of the stone.

CARVED FOLDS
SEEN IN ANCIENT MARBLE
SCULPTURES.



Ribbon.

Wallcoverings & Murals

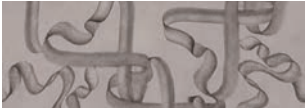
SPONTANEOUS TEXTURAL GRAPHITE LINES.

Intertwined ribbons that evoke movement, reminiscent of the style of Art Nouveau.

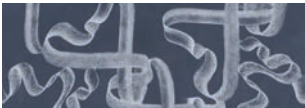
Ref. Ribbon Emerald B00248.



Ref. Ribbon Stone B00249.



Ref. Ribbon Lapislazuli B00250.



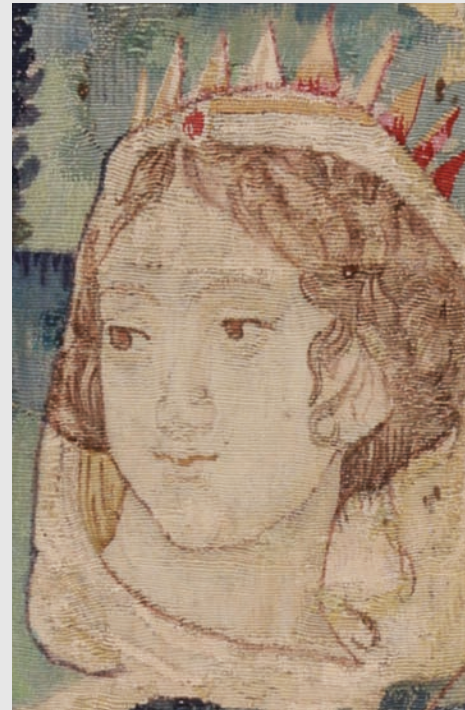
Hector Guimard (1867 - 1942) Le Castel Béranger.



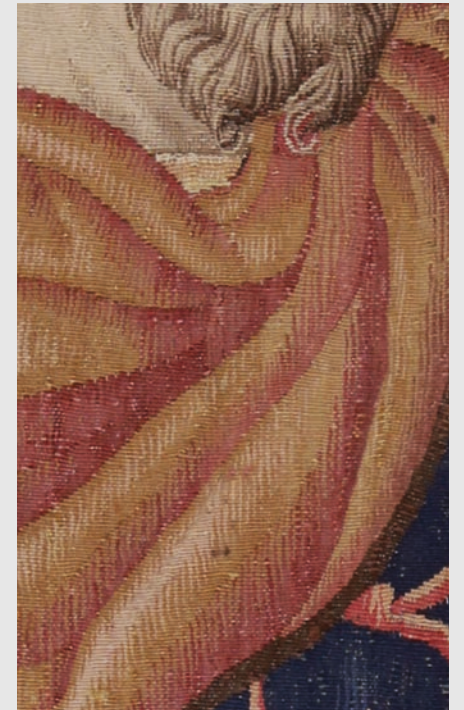
Ref. Ribbon Ink B00247.



Ref. Drapery Emerald B00251.



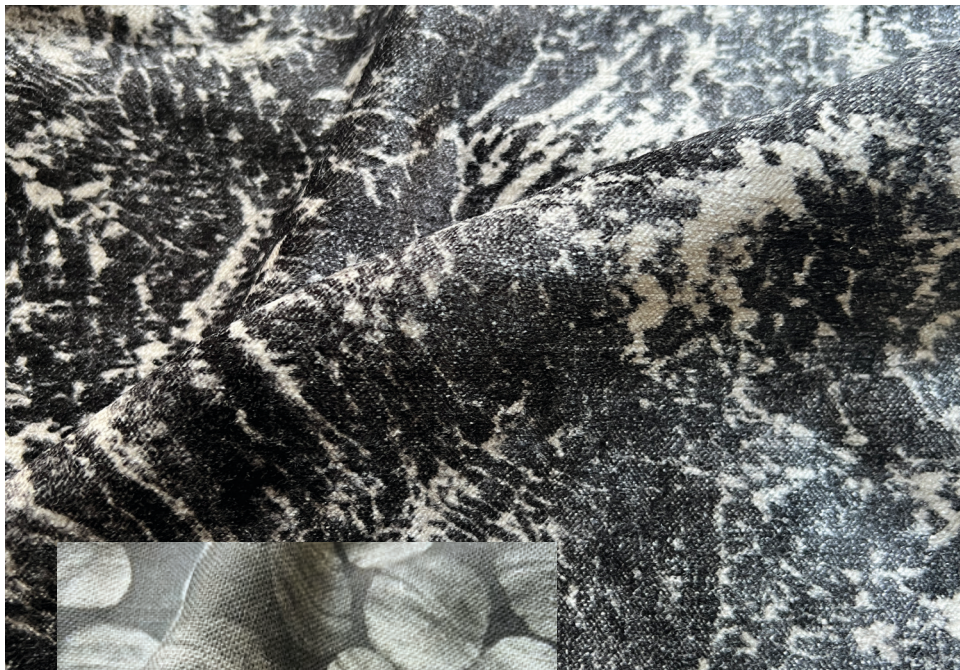
A visual collage inspired by the historical tapestry tradition from Brussels.



Belgian Tapestry, s.XVI, Aubusson Technique, Filottète & Juno.

WOVEN TEXTURES
REMINISCENT OF
TAPESTRIES.

drapery.



Ref. Sepia Stone
 145cm Width, 60% Cotton, 40% Viscose
 Martindale: 60.000
 650gr/m²



Ref. Brush Dots Stone
 150cm Width, 100% Linen
 Martindale: 20.000
 370gr/m²



Ref. Collage Sand
 330cm Width, 100% Linen
 170gr/m²

*“SUCCESSFUL DESIGN
 IS NOT ABOUT BEING
 TRENDY OR FASHIONABLE,*

*but should have a classic
 contemporary appeal.”*

Adding Beauty to Everyday Life

Coordonné is an editor of wall coverings, fabrics and decorative paints from Barcelona, which since 1978 has been creating collections to bring emotion and life to spaces.



C/ Mèxic, 32
08004, Barcelona, Spain

www.coordonne.com
marketing@coordonne.com

+34 933 22 73 14