

Victorian

Coordonné



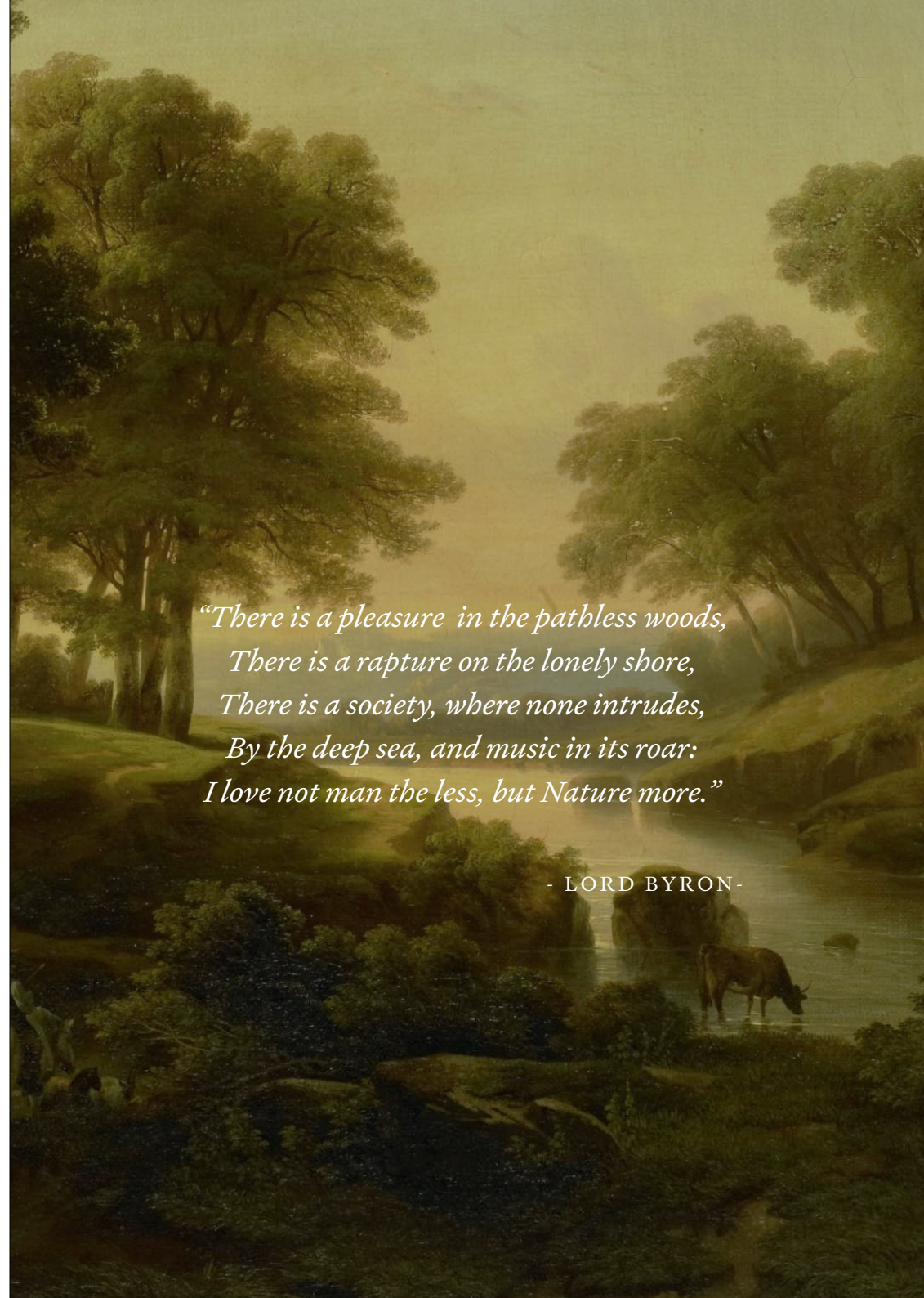
Victorian



Victorian features romantic designs that immerse you in 19th century Britain. Versatile patterns inspired by bucolic landscapes and rural enclaves where you can take refuge. In this collection, you will discover the classic hues of the *cottage style*.

*“There is a pleasure in the pathless woods,
There is a rapture on the lonely shore,
There is a society, where none intrudes,
By the deep sea, and music in its roar:
I love not man the less, but Nature more.”*

- LORD BYRON -



Slate Blue



Wall in steel blue.



Such was its importance, that at the end of the 18th century a competition was organised to find the Royal Blue.



Detail from a cottage garden.

Blue tones are common in this type of décor due to their lightness, freshness, elegance and sophistication.



Ref. B00350 Chestnut tree Blue



Ref. B00356 Verdure 16th Blue



Ref. B00332 Lily Blue



Ref. B00320 Poppy Blue



Ref. B00301 Twig Curry

Warm curry



Wallcoverings & Murals

Sir John Soane's Museum.
Photography by Gareth Gardner.

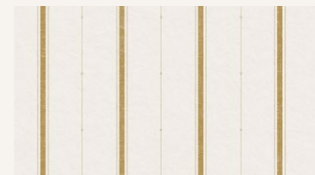


Ref. B00331 Lily Curry.



Ref. B00325 Paisley Curry.

Warm yellow was also introduced into English Victorian décor by way of the architect Sir John Soanes, who brought it to Britain after falling in love with it on his travels through Italy.



Ref. B00343 Lineal Curry.



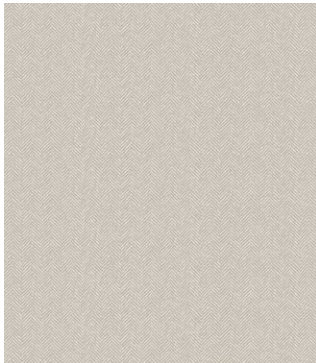
Ref. B00349 Chestnut Tree Curry.

Cotton ecru



Thomas Adams Lace Factory, Stoney Street, Nottingham, 1914

Ecru has been a feature of cotton lace fabrics since the first half of the 19th century, when Nottingham became the centre of machine manufacturing.



Ref. B00340 Spike Ecru.



Ref. B00352 Chestnut Tree Ecru.



Ref. B00365 Countryside Ink.



Ref. B00346 Lineal Ecru.



Ref. B00351 Chestnut Red.

Classic red



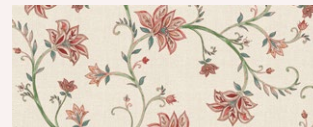
Decorator's personal collection by Charles III Robert Kime.



Ref. B00312 Clover Vermillion.



Ref. B00321 Poppy Red.



Ref. B00333 Lily Red.



Ref. B00339 Spike Red.

Demonstrating the strength of English character and personality, and perhaps influenced by the poppies of the Cotswolds, we can also find a vibrant palette of red tones.

Glazed green



Victorian majolica earthenware. Made in the 19th century in Great Britain.

Without doubt, the inclusion of green colours and natural elements is essential.



Ref. B00354 Verdure 16th Green.



Ref. B00368 Engraving Green.



Ref. B00359 Vine Shadow Green.



Ref. B00371 Byron Poem Green.

Clay Brown



Finally, we find the earth tones. This thanks to the noble woods used in the furniture such as mahogany, oak or walnut.



Ref. B00323 Poppy Clay.



Ref. B00358 Verdure Clay.



Ref. B00347 Lineal Clay.



Ref. B00335 Lily Clay.



Ref. B00363 Countryside Pink.



Ref. B00367 Mural Engraving Ink.

Adding beauty to everyday life.

Coordonné is an editor of wall coverings,
fabrics and decorative paints from Barcelona,
which since 1978 has been creating collections
to bring emotion and life to spaces.



C/ Mèxic, 32
08004, Barcelona, Spain

www.coordonne.com
marketing@coordonne.com

+34 933 22 73 14